

Baxter

EvoIQ

INFUSION PLATFORM

INFUSION DELIVERY. **EVOLVED.**

Simply Smarter.



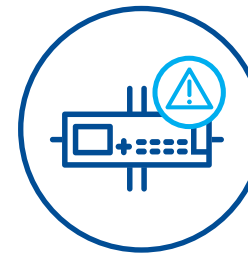


EVOLVING PATIENT SAFETY TO AN INDUSTRY-LEADING LEVEL.

With **Evo IQ LVP Infusion System** and **Evo IQ Syringe Infusion System**, the **Evo IQ Platform** allows you to choose the right technology for your patients' specific needs.

From market-leading experience comes the **Evo IQ** Infusion Platform, with a unique array of features to elevate the standard of patient safety, enhance clinician efficiency, and empower the adoption of new technologies, now and in the future.

With **Evo IQ LVP** and Syringe pumps supported by **Dose IQ Safety Software** and **IQ Enterprise Connectivity Suite**, the **Evo IQ Platform** helps maximise return on investment with the convenience, efficiency and additional safety of an integrated platform.



ADVANCED DOSE ERROR REDUCTION SYSTEM

State-of-the-art medication error prevention.

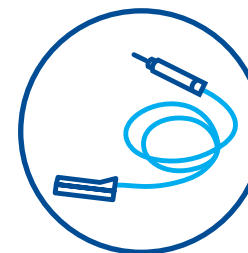
The **Evo IQ** Platform is exclusively designed with web-based **Dose IQ** Safety Software to potentially reduce harmful infusion programming errors, providing nurses with feedback at the bedside to support the safe delivery of infusions to the patient.



INTUITIVE CLINICAL WORKFLOWS

Standardised user experience. Streamlined intuitive workflows.

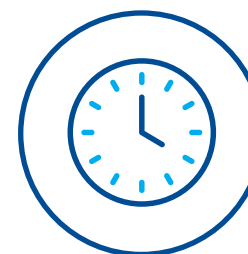
Easy-to-use systems are more likely to be used.¹ **Dose IQ** is optimised to support both LVP and Syringe drug libraries with a shared modern interface and streamlined clinical workflows to increase compliance.



OPTIMISED SET PORTFOLIO

Realize efficiency and cost savings across the set portfolio.

Backed by Baxter's more than 40 years of IV set know-how, the **Evo IQ** Infusion Platform seamlessly integrates with our advanced set portfolio, which is designed to help reduce waste and deliver cost savings across the healthcare facility.



FORWARD-LOOKING EFFICIENCY

Evolved technology optimises time and resources.

The newest evolution of **Evo IQ** delivers shared efficiencies across LVP and Syringe pumps for your hospital today and tomorrow. Features such as a shared drug library and **IQ Enterprise** Connectivity Suite help expedite drug library creation and updates, while a consistent user experience helps streamline training and implementation.

A COMPREHENSIVE APPROACH TO SAFETY.

According to NHS data, more than 230 million medication errors occur in England annually.² What's more, up to 54% of all IV errors occur during drug administration.² Thus, consistent use of safety features that help minimise patient risk are increasingly important. Two common sources of error identified are:

- Inadequate systems to disseminate drug knowledge to physicians and nurses³
- Inadequate systems to ensure the right drug and drug dosing prior to bedside administration³



The Evo IQ Platform helps make immediate use of the smart pump's defining safety feature: the drug library.

The drug library is essential to identifying potentially harmful infusion programming errors. It contains drug dosing information, including dosing limits; infusion parameters; and drug-specific advisories. Consistent use of a smart pump's key safety feature, the drug library, helps minimise patient risk.

Both Evo IQ LVP and Syringe pumps are designed with web-based Dose IQ Safety Software to help make drug library adoption and compliance easier to achieve by:



PROVIDES CLINICIANS THE FLEXIBILITY
to access **Dose IQ** from any computer connected to the hospital



AUTOMATICALLY DEFAULTING TO THE DRUG LIBRARY
at power-on and requiring fewer programming steps to start an infusion



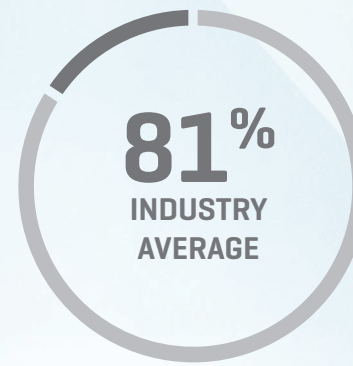
PROVIDING DOSING FEEDBACK
at the point of use—not only the drug name, but also soft and hard safety limits, as well as specific drug configurations



ENABLING EASY, WIRELESS DRUG LIBRARY UPDATES
via the **Evo IQ Gateway** to ensure that programming is based on the most up-to-date parameters

Customisable Dose IQ safety software streamlines programming steps and is designed to help reduce the chance of error.

Shared across the common **Evo IQ Platform**, the powerful **Dose IQ** safety software coordinates a customised drug library that includes facility-defined dosing parameters with pump programming. When a drug library is loaded onto either the LVP or Syringe pump, its seamless design enables the clinician to quickly program the drugs with fewer key presses — which reduces the chance for key press error.



The **industry average** for drug library compliance in the US, which leaves millions of infusions unprotected.⁴



The **Evo IQ Platform** leverages the same drug library technology as the family of **Spectrum** infusion systems, which deliver an average of **97% drug library compliance** within 1 month of implementation.⁵



Integrated Dynamic Pressure Monitoring helps identify infusion issues sooner.

Built into **Evo IQ** pumps, Dynamic Pressure Monitoring helps nurses identify trends in infusion pressure and potentially identify issues earlier—without requiring a special set.



PERFORMANCE THAT EMPOWERS EVERY USER.

Intelligent and user-centric, the **Evo IQ** Infusion Platform helps to support the best clinical practices to deliver consistent, intuitive operation across LVP and Syringe pumps, which helps to save time and effort for nurses, pharmacists and biomedical engineers.

Simplifying clinical tasks with tested and streamlined workflows.

Informed by rigorous human factors research and delivered across a common platform, the **Evo IQ** platform was engineered to deliver simplicity and safety.



9 Global Human Factors

usability studies executed during product design⁶



Over 225 Hours

of hands-on clinical feedback incorporated into the design⁶



Clinical Feedback

from Adult, Paediatric, and Neonatal critical care and anesthesia specialists⁶

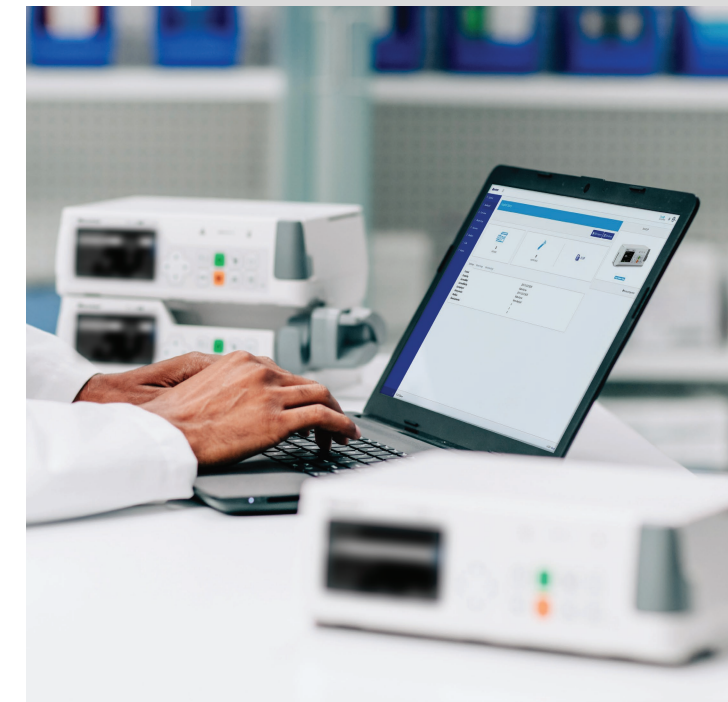
The end result—the **Evo IQ** Platform was designed to help nurses do their jobs more efficiently, safely, and confidently⁶ by delivering:

- Lightweight and portable design with stacking and docking station options for bedside organisation
- Facility-customised infusion safety feedback at the pump using **Dose IQ** Safety Software
- Clear organisation of critical infusion parameters on screen
- Dynamic Pressure Monitoring (DPM) for early indication of IV line pressure build up and unique downstream auto-restart to minimise interruption of therapy, available on LVP
- Alarms differentiated by severity (audio and visual) to minimise alarm fatigue⁷

Empowering pharmacists to ensure infusions are delivered safely.

Setting the groundwork for a drug library upon pump implementation helps build standardisation for continued use and expansion. Baxter's proven implementation process provides pharmacists with the training and framework to develop, customise and evolve a drug library to meet their facility's needs today and tomorrow.

- A Baxter specialist partners with the pharmacist to build the initial drug library, taking a phased approach if necessary
- After implementation, pharmacists have direct access to drug library software to evolve and update as needed for their facility
- Baxter's Universal Implementation (UIP) process delivered **99% customer satisfaction** post go-live⁸



Offering biomed tech increased simplicity for greater efficiency.

- Easy serviceability for greater efficiency and convenience to help get pumps back in use sooner
- Modular design with multiple, cost-effective, field replaceable units (FRUs) to streamline service and maintenance
- Full system self-test at start-up to check the system status and provide an error or abnormal code for easier diagnosis and repair



EFFICIENCY TODAY. FLEXIBILITY FOR TOMORROW.

Technology moves quickly. That's why we intelligently engineered the **Evo IQ** system as a dynamic platform that provides total life value to hospital systems. Foresight is evident throughout its design and execution – from efficiencies in implementation, training and maintenance, to easily upgradable functionality for future needs.

Total system efficiency from training to servicing.

The **Evo IQ** Platform is designed to optimise efficiency with:

- Common user interface for LVP and Syringe pumps that makes training fast, easy and safe
- Intuitive hardware, software, and workflows that can potentially reduce implementation, training and servicing costs
- Modular design featuring multiple field-replaceable units that simplify service and help reduce repair expenses

The next phase of the **Evo IQ** evolution.

With **Evo IQ** LVP and Syringe pumps integrated with **Dose IQ** and **IQ Enterprise** Connectivity Suite, Baxter continues to deliver on the technology roadmap and our promise to continue evolving smart pump technology to meet the ever-changing needs of healthcare.



Current

- LVP and Syringe Pumps
- Advanced Set Portfolio
- Software updates enabling advanced features
- Built-in connectivity capability to enable efficient wireless drug library updates

Future

- Integration capabilities
- Advanced reporting capabilities
- Additional services

Advanced Digital Capabilities Deliver Meaningful Connectivity

IQ Enterprise Connectivity Suite allows for centralised and streamlined management of the drug library. Wireless connectivity eliminates the need for manual, pump-by-pump drug library updates. Instead, updates can be pushed from a single source to the entire fleet of connected **Evo IQ** LVP and Syringe smart pumps.



DOSE IQ TECHNOLOGY

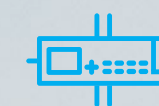
Dose IQ is Baxter's advanced web-based drug library and dose error reduction system.

The pharmacist creates a drug library file using **Dose IQ**, to be wirelessly distributed to pumps using **IQ Enterprise**.



IQ ENTERPRISE CONNECTIVITY SUITE

Baxter's unique software application that can be accessed via a web browser within the hospital network, **IQ Enterprise** enables the wireless distribution of drug libraries to pumps. Baxter works with you to implement **IQ Enterprise** onto your hospital's network.



SEAMLESS DISTRIBUTION

IQ Enterprise wirelessly delivers drug libraries to all connected pumps, to help ensure pump programs are based on the most up-to-date information.



TIMELY UPDATES

If there is an infusion in progress, the update will be placed in queue until the pump becomes available. The drug library version is also checked each time the pump connects to the server, and updates as needed.

Reducing time for IV disconnects and re-priming can mean

AN ADDITIONAL
7,955
HOURS

per year for nursing staff to provide quality care for patients^{10*}

POTENTIALLY
11K
FEWER IV TUBING
DISCONNECTS
per year for the
average facility¹⁰



ADVANCED SET PORTFOLIO DELIVERS TOTAL VALUE

Evo IQ LVP with standardised One Set Technology helps save time and decrease touch contamination.

- Enables clinicians to easily switch between gravity and pump applications without changing sets
- Saves nurses' time by eliminating set teardown
- Minimises opportunities for touch contamination?
- Streamlines IV infusion implementation and integration throughout the entire hospital

Our robust portfolio of syringe sets are clinically tested to deliver optimum accuracy with the Evo IQ Syringe pump.

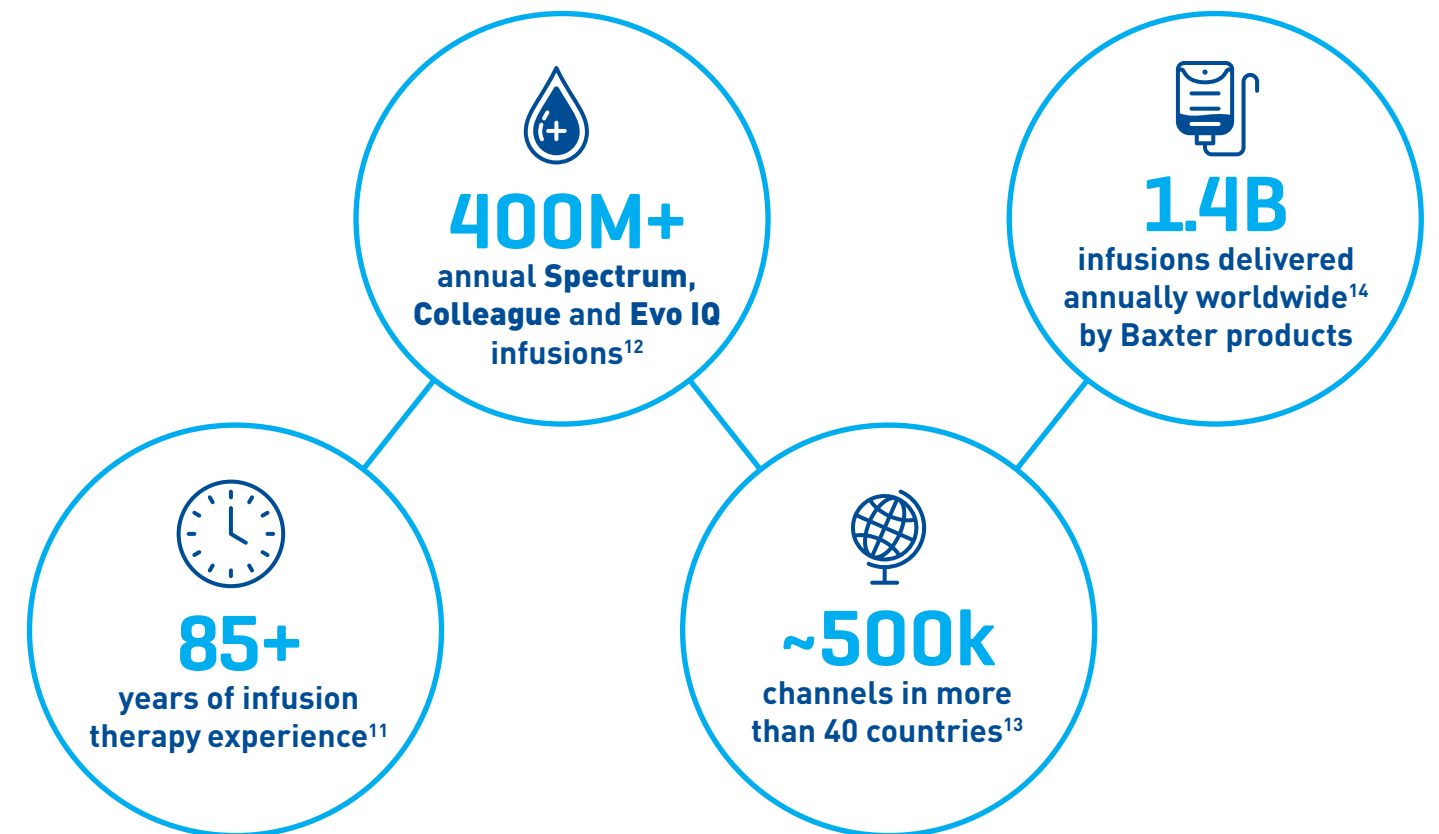
- Micro-Volume and Mini-Volume Extension Sets with and without integrated 0.2µm filter
- Mini-Volume Extension Sets with and without integrated Anti-Siphon Valves
- Polyethylene (PE) Lined Micro and Mini Volume Extension Sets
- Light Resistant Micro and Mini Volume Extension Sets
- Standard Bore Blood Extension Set
- Integrated Blood Set, which is designed to help eliminate blood waste when infusing blood to a patient via syringe pump
- Stand-Alone Components (Anti-Siphon Valve, Back Check Valve, Stopcock and Filters)

BUILT ON EXPERIENCE.

We put everything we know into Evo IQ.

Every stage of research and development was infused with the kind of insight that only comes from decades of award-winning infusion system experience. The result: the **Evo IQ** Platform is a robust, best-in-class infusion system built to deliver the next generation of patient safety and clinical workflows.

Like every Baxter infusion therapy product, the **Evo IQ** Platform comes with the knowledge, insights, and best practices drawn from:



Backed by award-winning support.

Implementation, training, and support systems for the **Evo IQ** LVP and Syringe pumps are built on proven, award-winning best practices.¹⁵

Baxter's **Spectrum** LVP Platform was ranked #1 by KLAS's Smart Pumps 2018 "Deeper Partnering Needed" report for:

Quality of Implementation¹⁶

Quality of Training¹⁶

Quality of Phone and Web Support¹⁶

Ease of Use¹⁶

*Based on US facility data, March 2011.
Data on file. Baxter Healthcare Corporation.



Connect with your Baxter sales representative to get the full story.

Indications for Use

The **Evo IQ** volumetric pump is intended for use in a wide variety of patient care environments that include adult, pediatric, and neonatal. The **Evo IQ** volumetric pump facilitates the delivery of routine critical infusion therapies via continuous and intermittent delivery using primary and secondary infusion modes.

The **Evo IQ** syringe pump is intended for use in a wide variety of patient care environments that include adult, pediatric, and neonatal. The **Evo IQ** syringe pump facilitates the delivery of critical and routine medications and fluids via continuous and intermittent delivery modes.

For the safe and proper use of the devices referenced within, refer to the complete Instructions for Use or the appropriate operator's manual.

Please note that any details shown in relation to drug programming in this brochure are examples only – please refer to the drug's SPC for dosing guidelines.

1. Hackbarth G, Grover V and Yi MY. Computer Playfulness and Anxiety: Positive and Negative Mediators of the System Experience Effect on Perceived Ease of Use.
2. Prevalence and economic burden of medication errors in the NHS in England. Elliot, et al. Feb 2018.
3. Kinnealey E, Fishman G, Sims N, et al. Infusion Pumps with "Drug Libraries" at The Point of Care - A Solution for Safer Drug Delivery National Patient Safety Foundation. 2003.
4. Data on File. Baxter Healthcare Corporation. DERS new implementation compliance data 2015.
5. Hoh T, Beer I, Krueger P. Ensuring optimal smart pump use through augmented user interface. Horizons. Fall 2015.
6. Data on File. Baxter Healthcare Corporation. Evo IQ Human Factors Studies. 2018.
7. The Joint Commission. Alarm System Safety.; 2013.
Available at: http://www.jointcommission.org/assets/1/18/R3_Report_Issue_5_12_2_13_Final.pdf. Accessed November 3, 2017.
8. Data on file. Baxter Healthcare Corporation. Baxter post-implementation surveys.
9. Data on File. Baxter Healthcare Corporation. Total cost of ownership—Standard set technology inventory and cost reduction data 2011–2013.
10. Baxter Healthcare Corporation. Baxter IV Standard Sets Total Cost of Ownership Savings Report. 2011.
11. Baxter Corporate Communications. Baxter history. <https://www.baxter.com/our-story/our-history>. Accessed January 15, 2020.
12. Data on file. Baxter Healthcare Corporation. Infusions Delivered Per Year, 2017.
13. Data on file. Baxter Healthcare Corporation, Channel Data, 2018.
14. Data on file. Baxter Healthcare Corporation, Finance. Yearly Worldwide Infusions. 2014.
15. 2016 Best in KLAS: Medical Equipment, Baxter Healthcare SIGMA Spectrum (LVP only) ranked 2016 Best in KLAS for Smart Pumps.
16. Smart Pumps 2018. Deeper Partnering Needed. KLAS Enterprises LLC. All rights reserved.
<https://klasresearch.com/report/smartpumps-2018/1282>.

www.EvoIQinfusion.com

For Healthcare Professionals Only.

Baxter Healthcare (Asia) Pte Ltd
150 Beach Road #3001/08
Gateway West Singapore 189720
Tel: (65) 6826 1900 Fax: (65) 6222 9927

Baxter, Dose IQ and Evo IQ are trademarks of Baxter International Inc. Any other trademarks, product brands, or images appearing herein are the property of their respective owners.

SG/EVO/20-0012